

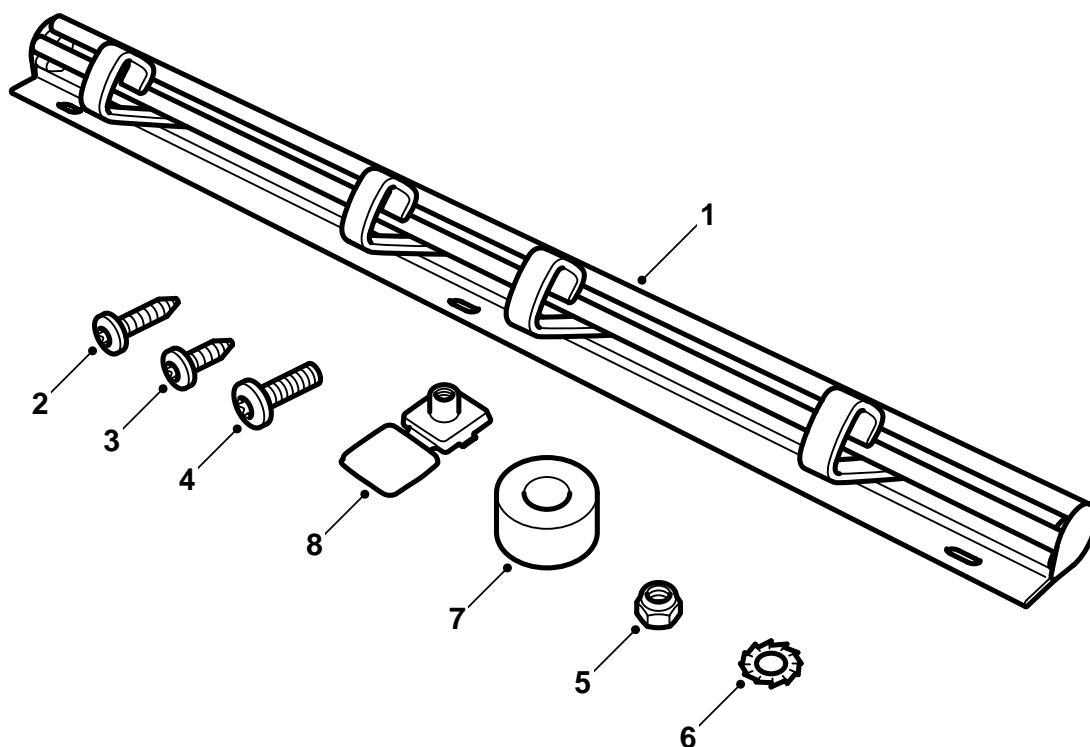


**MONTERINGSANVISNING · INSTALLATION INSTRUCTIONS  
MONTAGEANLEITUNG · INSTRUCTIONS DE MONTAGE**

## Saab 9-3/9-5 4D/5D

### Carrier bag holder

Accessories Part No.	Group	Date	Instruction Part No.	Replaces
32 025 551	9:89-30	Sep 05	32 025 568	



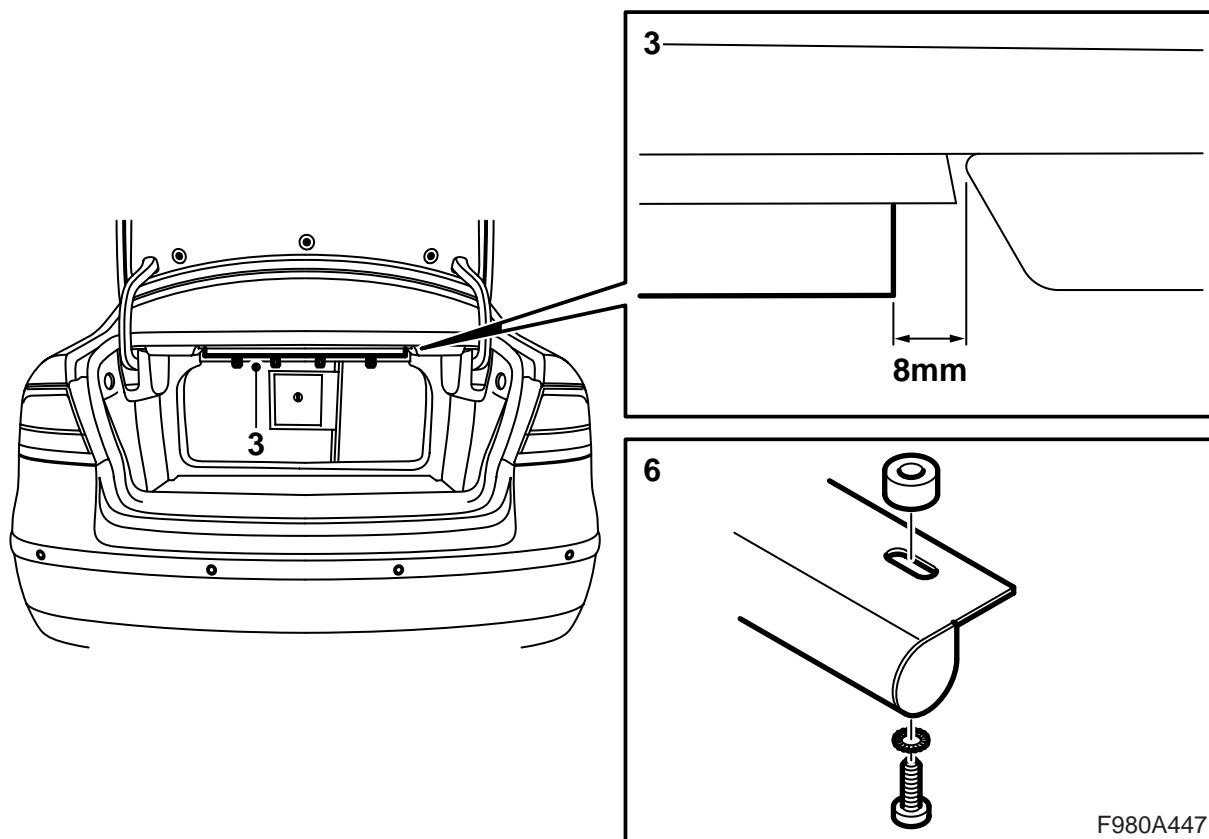
F980A446

- 1 Rail with 4 hooks and end pieces
- 2 Plate screw 4.8 x 19 mm (x2), for 9-3 4D
- 3 Plate screw 4.8 x 13 mm (x3), 3 for 9-3 5D,  
2 for 9-5 4D
- 4 Screw M5 x 16 (x2), for 9-5 5D
- 5 Nut M5 (x2), for 9-5 5D
- 6 Washers (x3)
- 7 Rubber spacer (x2), for 9-3 4D
- 8 Cover, beige (x2), grey (x2), parchment (x2),  
for 9-5 5D

The hooks can be removed by detaching an end piece.

**⚠ WARNING**

The hooks must not be used for securing loads.  
They are only intended for holding lighter objects  
in place during a journey



### 9-3 4D

- 1 Open the boot lid.
- 2 Fold down the backrest and crawl into the luggage compartment from the cabin and lie on your back.
- 3 Align the rail to the weld flange nearest the opening to the boot lid so that there is approx. 8 mm between the carrier bag holder and the handles for lowering the backrest. The oblong holes must be in the centre under the weld flange. The hooks must be aimed towards the boot lid.
- 4 Mark and drill a 3.5 hole in the centre of the weld flange for the right-hand hole.

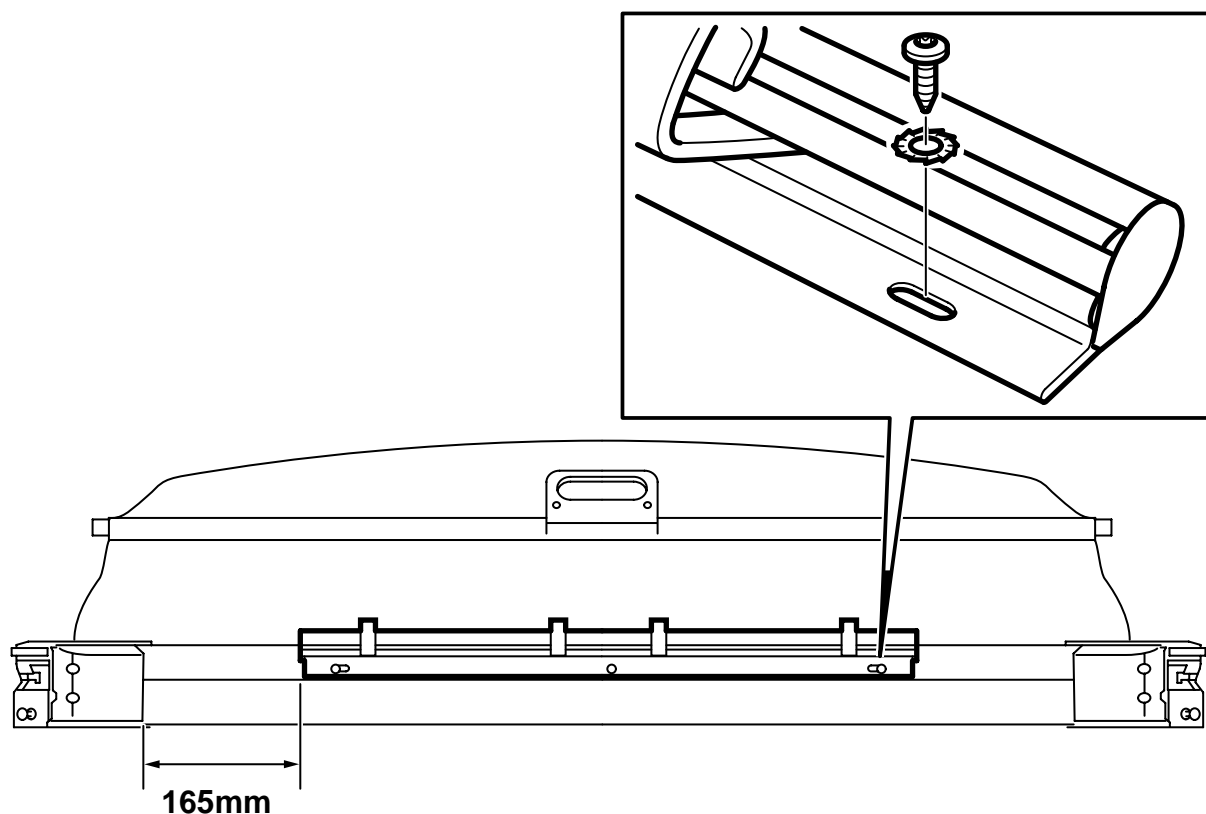
#### Important

Do not drill in a spot weld. Use a stop on the drill bit to avoid drilling through the parcel shelf. (The panel is 1.6 mm thick).

- 5 Secure the rail using a screw 4.8 x 19 mm, align the rail and drill the hole on the left-hand side.
- 6 Fit the rubber spacers between the rail and the body on both sides. Fit the washer on the plate screw and tighten the rail in manually.

#### Tightening torque 3 Nm (2.2 lbf ft)

- 7 Fold back the backrest and close the boot lid.  
Give the first page to the customer and show the warning text.



F980A448

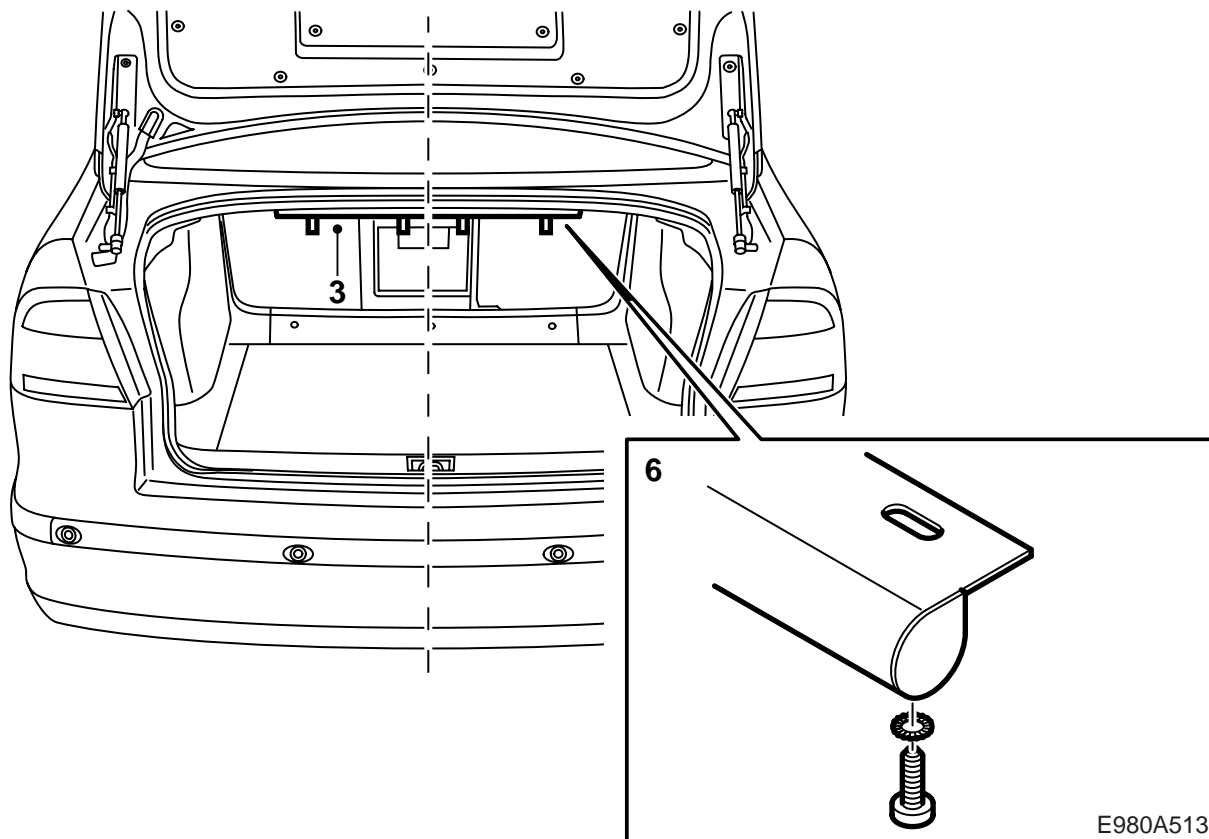
### 9-3 5D

- 1 Open the tailgate and remove the cargo guard.
- 2 Align the rail to the cargo guard so that there is approx. 165 mm between the carrier bag holder and the plastic edge, and 15 mm from the notch in the aluminium profile to the centre of the hole. The hooks must be aimed towards the tailgate.
- 3 Mark and drill a 3.5 hole for the centre hole of the rail.

#### Important

Use a stop on the drill bit to avoid drilling through the cargo guard. (The panel is 1.6 mm thick).

- 4 Secure the rail using a screw 4.8 x 13 mm and washer, align the rail and drill the other two holes.
  - 5 Fit a screw 4.8 x 13 mm with washer in the new holes and secure the holder.
- Tightening torque 3 Nm (2.2 lbf ft)**
- 6 Refit the cargo guard and close the tailgate.  
Give the first page to the customer and show the warning text.



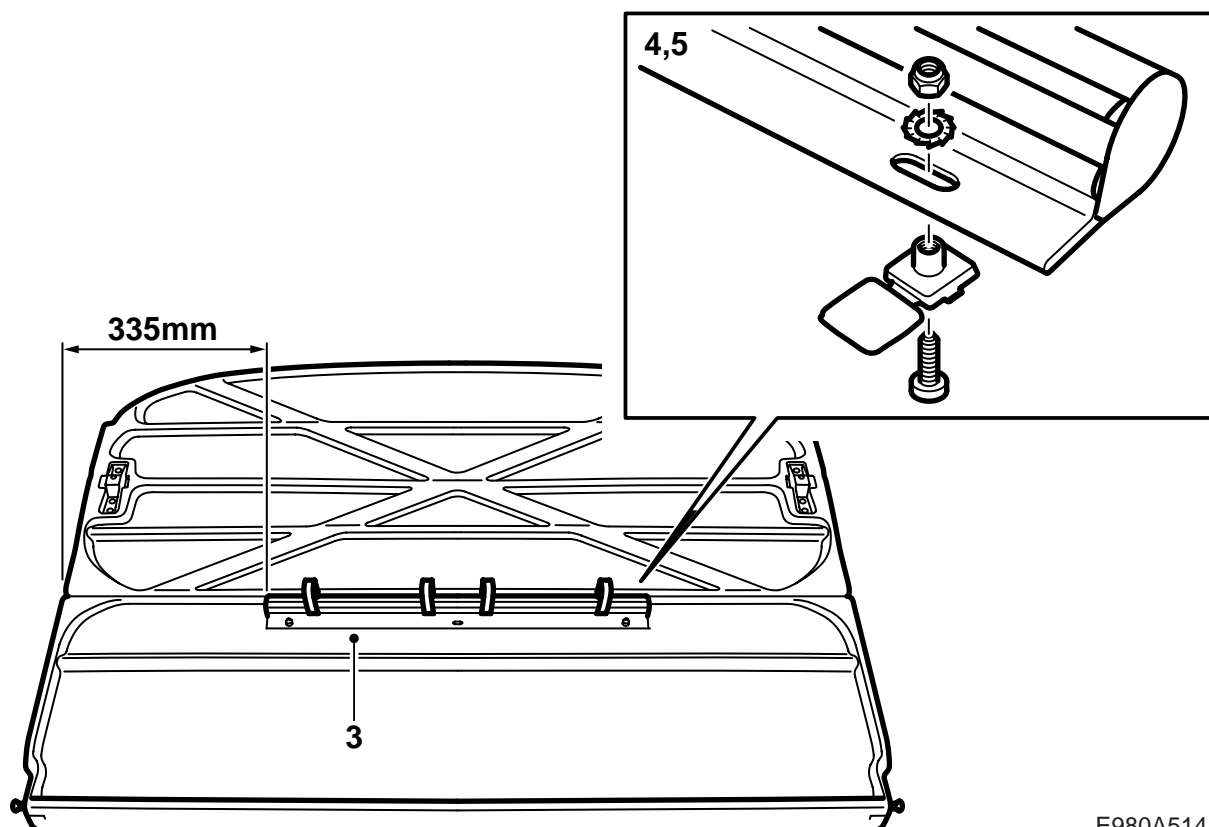
### 9-5 4D

- 1 Open the boot lid.
- 2 Fold down the backrest and crawl into the luggage compartment from the cabin and lie on your back.
- 3 Align the rail to the weld flange nearest the opening to the boot lid so that it is in the centre of the car (the luggage compartment lamp is fitted in the centre). The oblong holes must be in the centre under the weld flange. The hooks must be aimed towards the boot lid.
- 4 Mark and drill a 3.5 hole in the centre of the weld flange for the right-hand hole.

#### Important

Do not drill in a spot weld. Use a stop on the drill bit to avoid drilling through the parcel shelf. (The panel is 1.6 mm thick).

- 5 Secure the rail using a screw 4.8 x 13 mm and washer, align the rail and drill the hole on the left-hand side.
- 6 Fit the screw 4.8 x 13 mm with a washer in the new hole and secure the holder manually.  
**Tightening torque 3 Nm (2.2 lbf ft)**
- 7 Fold back the backrest and close the boot lid.  
Give the first page to the customer and show the warning text.



E980A514

### 9-5 5D

- 1 Open the tailgate and remove the cargo guard.
- 2 The rail is fitted in the centre of the cargo guard's underside at the folding line and on the section nearest the backrest. The hooks must be aimed towards the tailgate.
- 3 Align the rail so that it is located against the edge, approx. 335 mm from the side. Mark and drill through two 6 mm holes for the outer mounting holes.
- 4 Press in the colour-coordinated covers from the top and press through the two M5 screws.
- 5 Fit the rail with nuts and washers.
- 6 Close the caps on the covers.
- 7 Refit the cargo guard and close the tailgate.  
Give the first page to the customer and show the warning text.