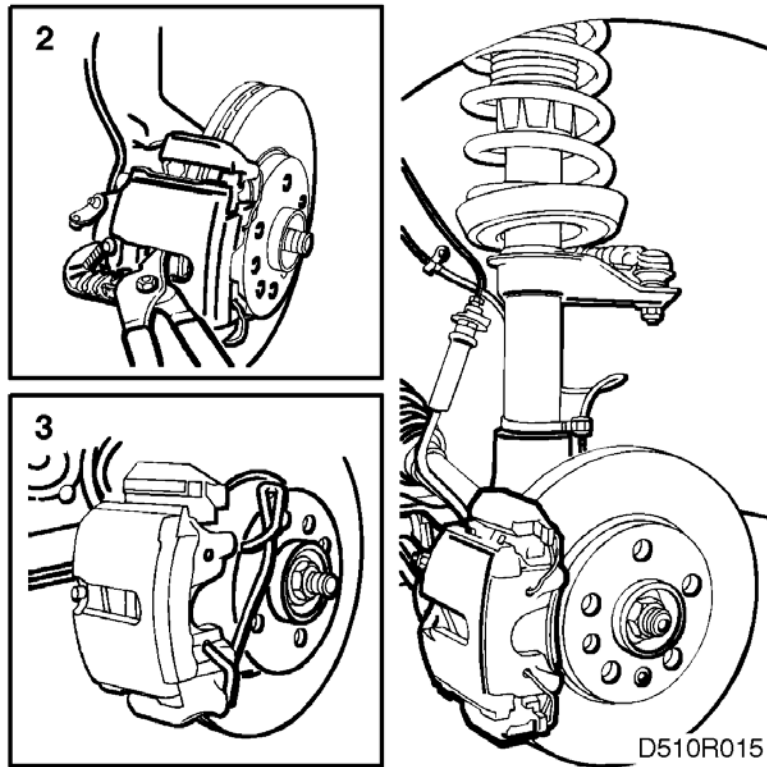


Brake pads, front wheel**Check**

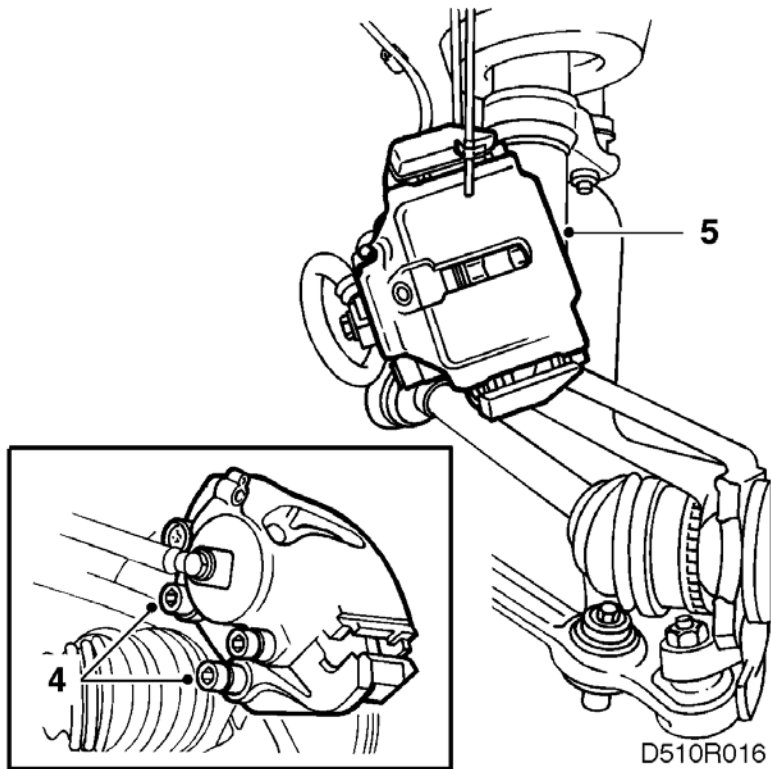
It is not possible to feel if the brake linings are worn by touching the pedal because the brakes are self adjusting. It is therefore very important to remove the wheel and check the thickness of the brake linings at the intervals stated in the inspection programme.

When the car is serviced the brake pads should be changed if the lining thickness is less than 5 mm (0.2 in).

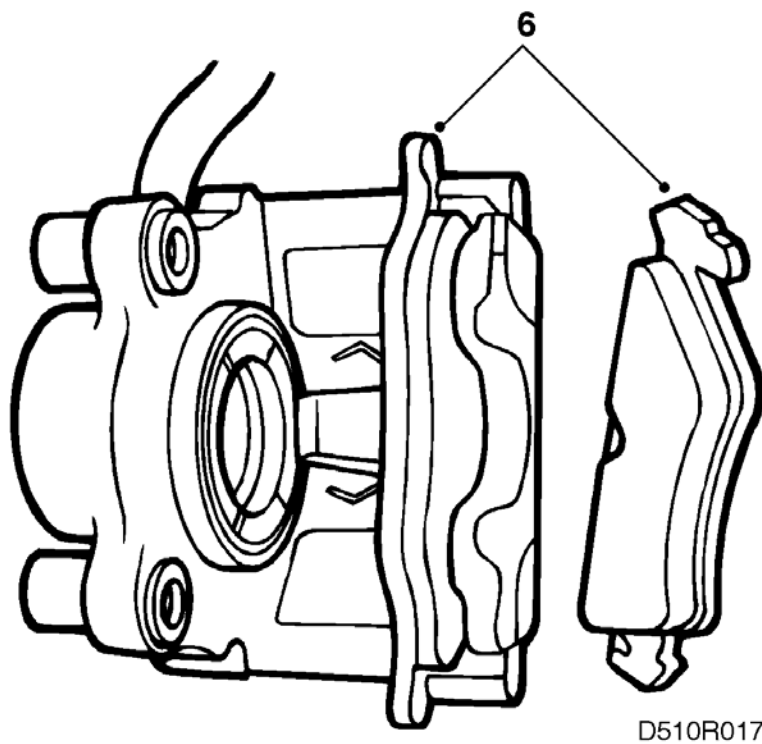
Removal

1. Lift the car and take off the wheel.
2. Press back the piston with a pair of grips.
3. Remove the clip from the brake caliper.
- 4.

Remove the dust caps from the guide pins and then remove the guide pins.

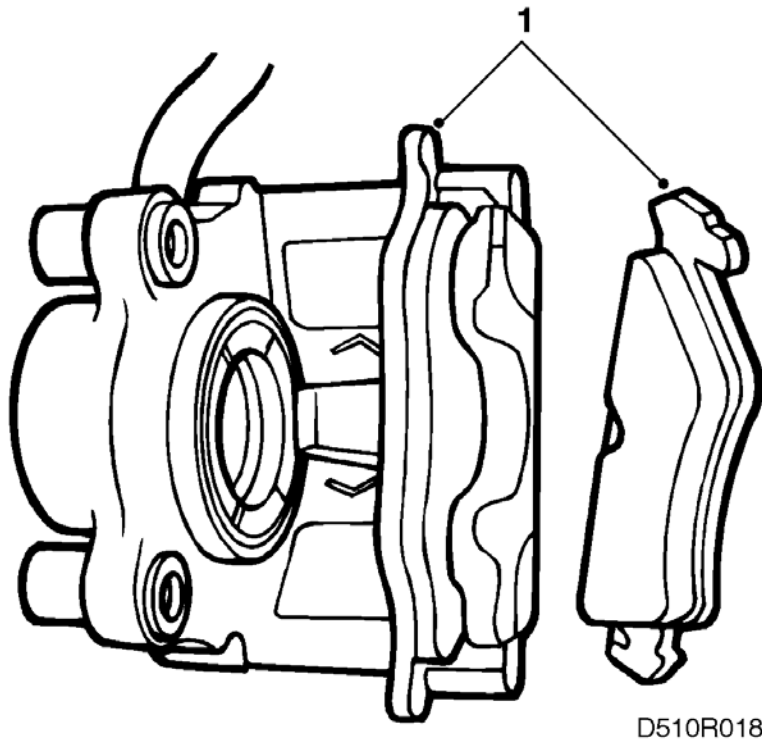


5. Lift the brake caliper from the brake disc and bind it to the spring strut with a cable tie.
6. Remove the brake pads.

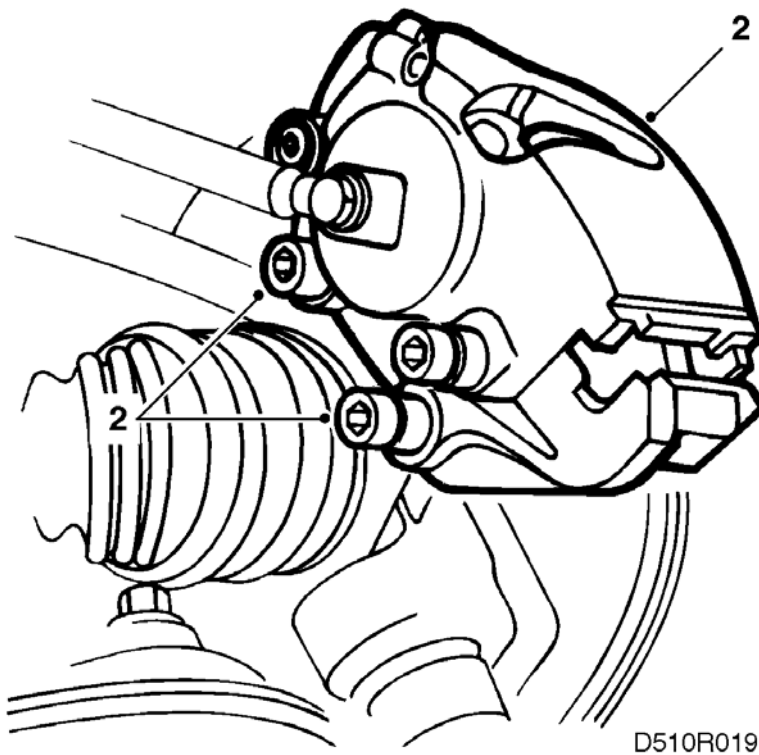


Clean the inside of the brake caliper and with a soft metal brush and check the dust covers.

Fitting



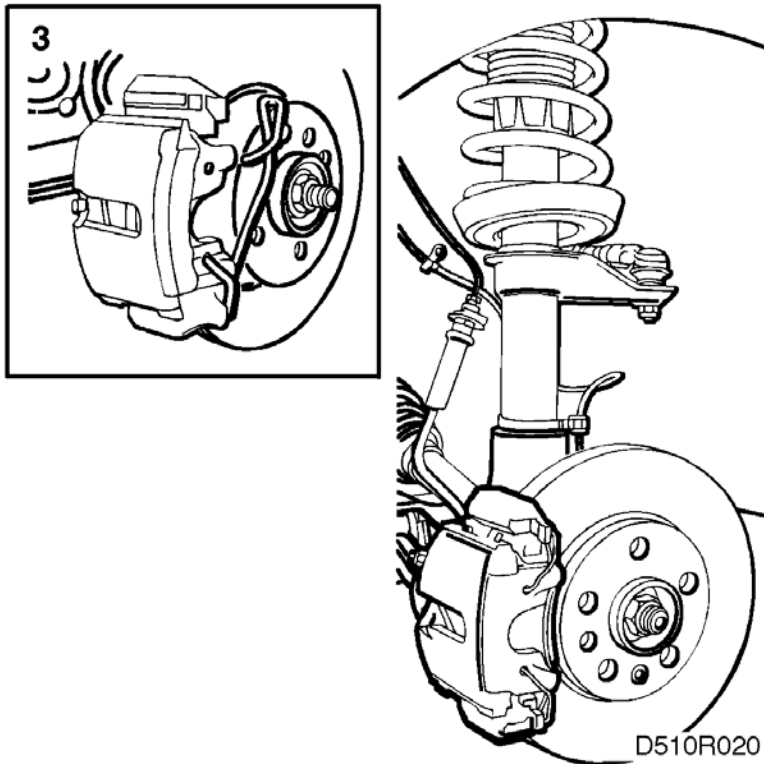
1. Fit the new brake pads in the brake caliper.
2. Fit the brake caliper and clean and tighten the guide pins.



Tightening torque

Guide pin 25 Nm (18.5 lbf ft)

3. Fit the dust caps and clip.



4. Replace the wheel and tighten the wheel studs.

Tightening torque

- **light alloy wheels 117 Nm (77.5-95.9 lbf ft)**
- **pressed steel wheels 100 Nm (74 lbf ft)**

5. Lower the car and force out the brake pads by depressing the brake pedal.

Correct the brake fluid level.