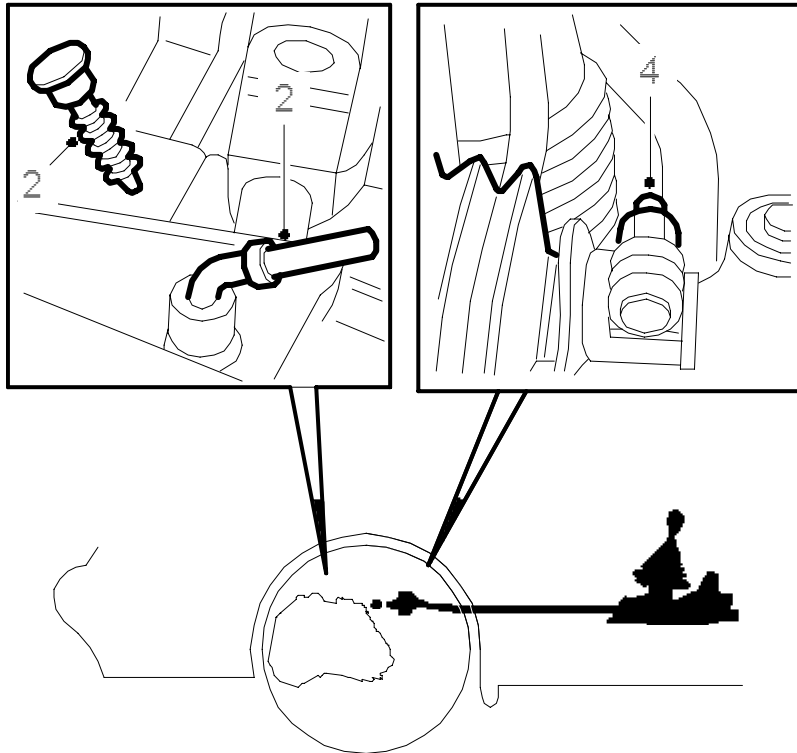


Checking and adjusting gear positions

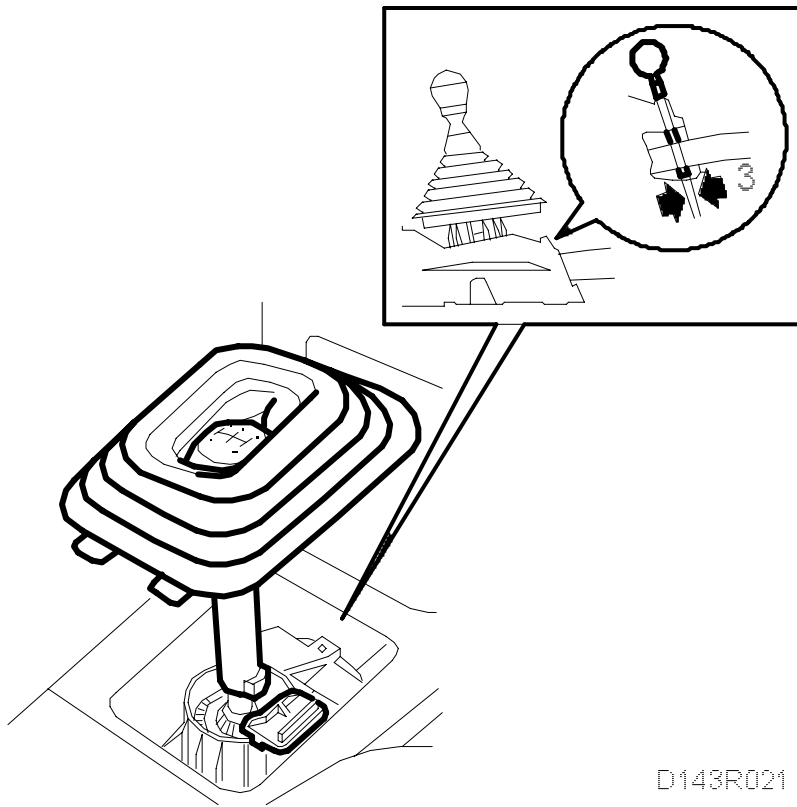
1. Engage 4th gear.



D143R020

2. Remove the plastic plug on the gearbox and insert [87 92 335 Locking pin](#) to secure 4th gear in the gearbox.
- 3.

Lift up the gaiter at the gear lever and check that [87 92 632 Locking pin](#) can be inserted in the hole of the gear lever housing.

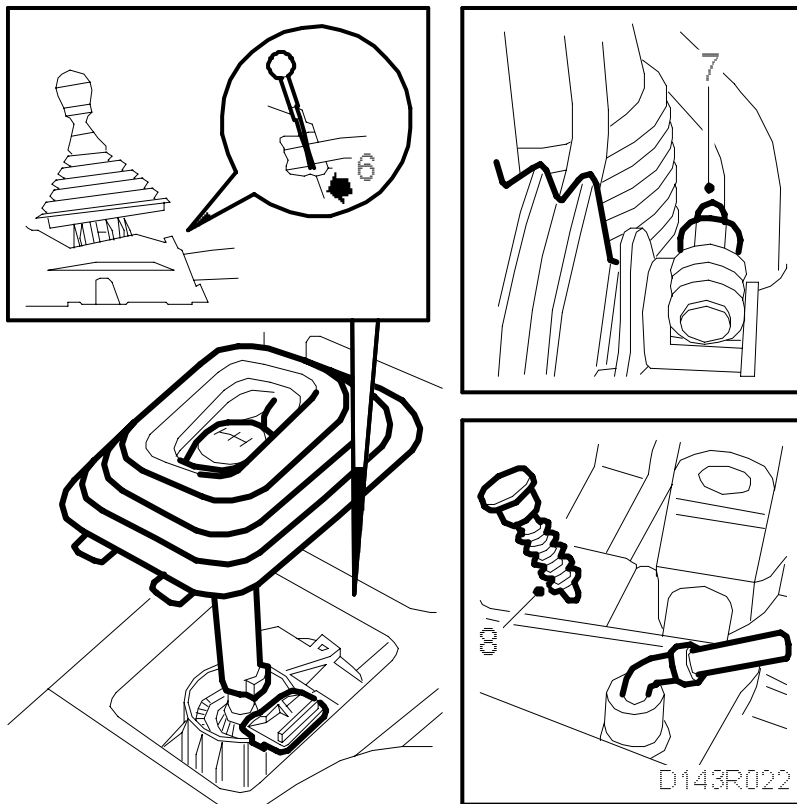


D143R021

If the locking pin cannot be inserted, the gear position needs adjusting as described in step 4 to 10 below. Remove the locking pin if no adjustment is required.

4. From above, undo the clamp securing the selector rod to the linkage on the gearbox.
- 5.

Check that the gear lever is set to 4th gear position.



6. Insert [87 92 632 Locking pin](#) into the gear lever housing.
7. Tighten the nut on the clamp securing the selector rod to the linkage on the gearbox.
Tightening torque: 22 Nm (16 lbf ft).
8. Remove the locking pin from the gearbox and insert the plastic plug.
9. Remove the locking pin from the gear lever housing and refit the gaiter.
10. Check that all gears can be engaged and that the key can be removed in reverse.